

KL17P

ON LIGHT COMMERCIAL VAN



Working height

SPECIFICATIONS



17.3m



10.5m



420°



250kg



Two
outriggers



125 x 75
x 110cm



≤ 3.5T



AERIAL PLATFORM KL17P

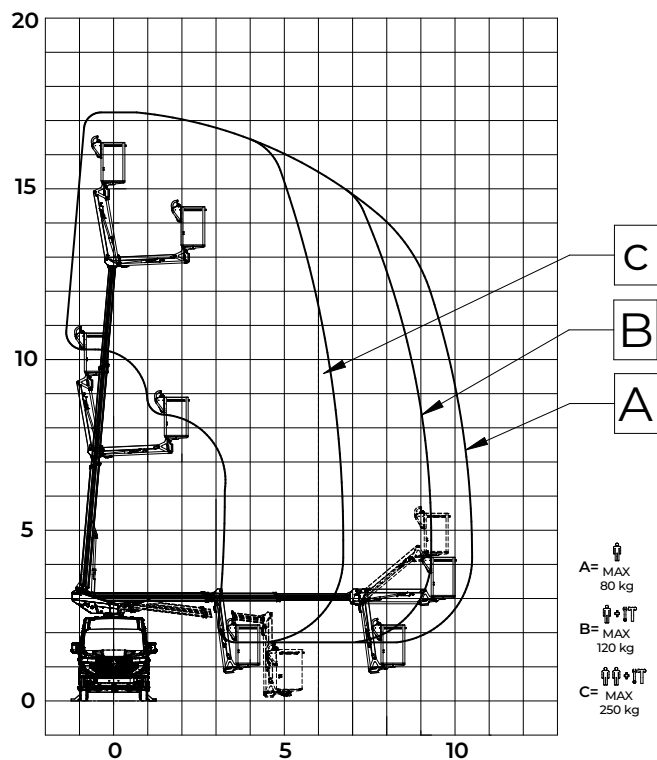
ON LIGHT COMMERCIAL VAN

POSSIBLE VEHICLE TYPES

- RENAULT MASTER XDD L2H2 3T5

Vehicles and options: contact our sales team to configure your ideal solution.

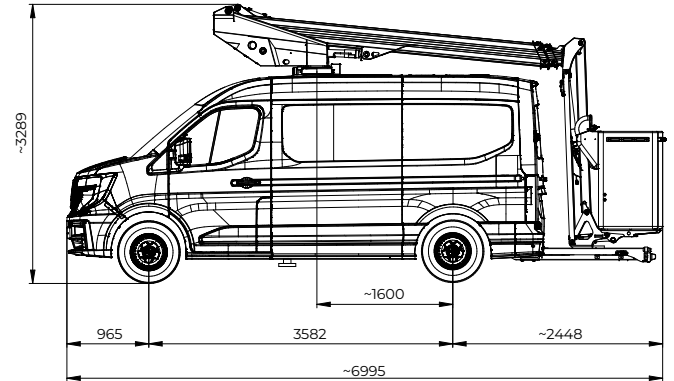
WORKING DIAGRAM



WEIGHT

3,100kg — with 90% full tank

DIAGRAM



STANDARD SPECIFICATIONS

- Three-section telescopic boom made of high-resistance steel
- New lightweight articulating jib
- New low-profile basket support
- Turret with optimised thickness within mirror width
- New reinforced multi-ply column
- Upper control box with 4.3" display
- Lower station with proportional joystick for all movements
- New optimised electro-hydraulic unit for smooth, simultaneous and proportional operations/movements
- New control unit (ECU) with simplified wiring system
- Redundant safety moment limiter with encoder for sector management
- Acceleration and deceleration ramp managed by the control unit
- Anti-collision system
- Home Function
- Proportional outreach according to load (from 80kg to 250kg)

OPTIONS

- Signage
- Interior fitting
- DIN
- BT200
- Rotating basket
- Green pack

Additional options available: contact our sales team to equip your aerial work platform according to your operational requirements.



Request a demonstration