

# Meet

## DINO 210XT II

### DINO® TRAILER MOUNTED MEWPs

#### Standard features in DINO 210XT II:

- Spider outriggers; great levelling capability in slopy terrain
- Two power sources as standard, 230 VAC and petrol engine (diesel as option)
- Driving system; easy to move at work site with cable steering
- Hydraulic basket rotation 180°
- Spacious, easy-entry basket; capacity 215 kg
- Large outrigger pads 280 x 360 mm
- Continuous rotation of the boom; easy and functional
- Stable to tow
- Simple to use, clear and informative controls

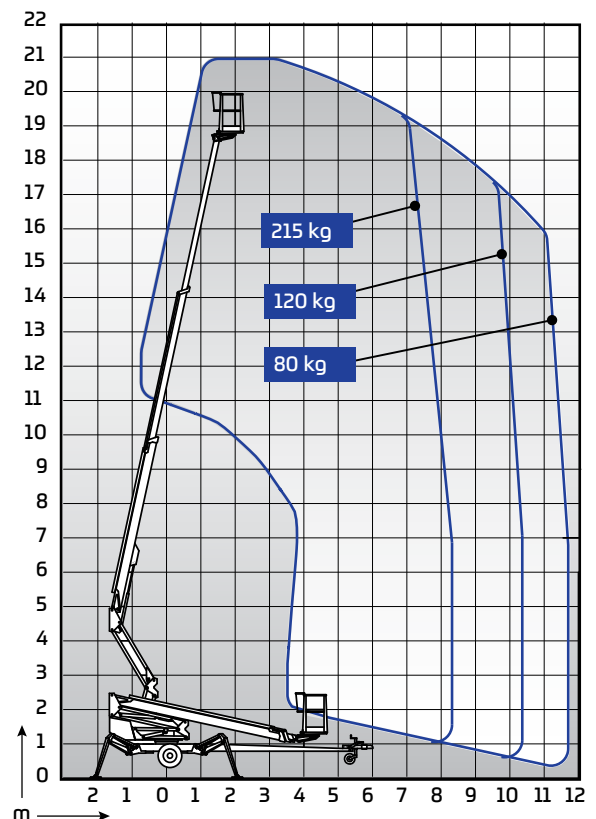
#### Technical data

|                             | 210XT II    |
|-----------------------------|-------------|
| Max. working height         | 21.00 m     |
| Max. platform height        | 19.00 m     |
| Max. outreach               | 11.70 m     |
| Support width               | 3.9 / 4.3 m |
| Lifting capacity            | 215 kg      |
| Basket size                 | 0.7 x 1.3 m |
| Boom rotation               | cont.       |
| Basket rotation             | 180 °       |
| Boom control                | proport.    |
| Transport length            | 7.92 m      |
| Transport width             | 1.95 m      |
| Transport height            | 2.33 m      |
| Weight                      | 2475 kg     |
| Driving system              | std         |
| AC socket in the basket x 2 | std         |
| Electric motor 110/230 VAC  | std         |
| Petrol power engine         | std         |
| Diesel power engine         | opt.        |
| Gradeability                | 25 %        |



#### Options available for DINO 210XT II:

- Diesel power engine
- Two joystick controls
- Outrigger support indicator
- Automatic levelling
- LED working lights
- Extra outrigger pads 500 x 500 x 35 mm + bracket
- Lockable tool / harness box
- Rack for tools and accessories
- DINO SafeGuard secondary guarding
- Spare wheel
- DINO SkyRack – plate & tube rack max loading 100 kg, 3 m<sup>2</sup>



# DINOLIFT

UP TO THE JOB

Dinolift Oy | Raikkolantie 145 • FI-32210 LOIMAA, FINLAND

Tel: +358 (0)20 1772 400 • E-mail: info@dinolift.com

[www.dinolift.com](http://www.dinolift.com)

Technical specifications are subject to change without prior notice.

©Dinolift Oy | 1.3.2021